

August 6, 2007– August 10, 2007

Bin with Standard Lid (No. 1) vs.
Bin with Bio-Filter Lid (No. 2)

Two standard wheeled bins are filled with the same organic waste. One bin equipped with a bio-filter lid and one with a standard lid.

Organic waste:	<u>1st Day</u>	<u>2nd Day</u>
	cooked meat	raw fish
	lettuce leaves	
	raw meat	
	paper layer	



1st Day

with Standard Lid



with a Bio-Filter Lid



2nd Day



3rd Day

with Standard Lid



with a Bio-Filter Lid



4th Day

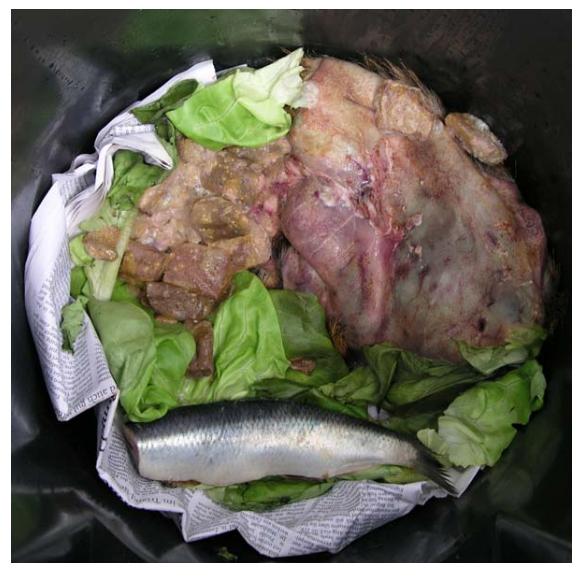
with Standard Lid



with a Bio-Filter Lid



Detail



5th Day

with Standard Lid

with a Bio-Filter Lid



Detail

