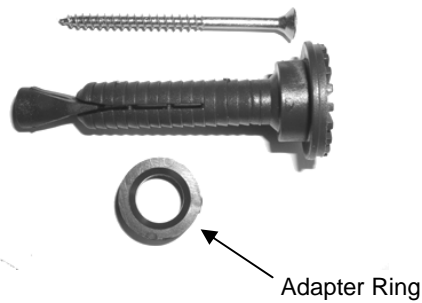


DATA SHEET UNIVERSAL-BOLT FOR LID

Technical Information

BIOLOGIC
 Ges. für Biotechnologie und
 Umweltschutz mbH & Co. KG
 Gildenstrasse 18

D-48157 Münster/Germany



SYSTEM

 BIOLOGIC

Universal –Bolt for Lid

Mounting:

1. For Hadle Bars with inner dia up to ca. 13 mm

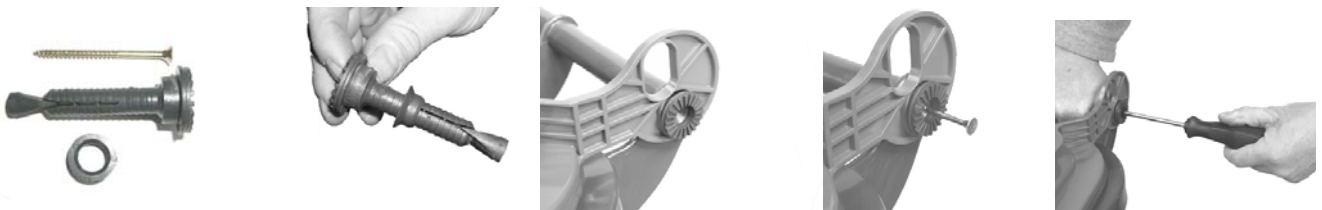
Remove the adapter ring and insert the Universal-Bolt into the handle bar.

Notice: In case the bolt may be removed without means of tools, it must be tightened as described below!!!



2. For Hadle Bars with inner dia up to ca. 16 mm

Place the adapter ring on the Universal-Bolt and fit it on as described above. Insert the screw 5*80 mm into the Universal-Bolt. Tightening of the screw will spread the bolt, which will be secured within the handle bar.



3. For Hadle Bars with inner dia exceeding 16 mm

Place the adapter ring as shown above and afterwards put the hose of approx. 4 cm length on Universal-Bolt. Please make sure that the hose will cover the adapter ring also. Now please proceed as explained above (Item 2.).

Important Notice for Using electrical screw drivers

Do not apply too much force, which might damage the screw!!!



Material:

Bolt: HD-PE
 Hose: EPDM
 Screw: Thread – yellow chromated

Colour:

RAL 7016, Anthracite Gray

Weight per Set:

ca. 45 g

Dimensions:

Please refer to the Illustration

